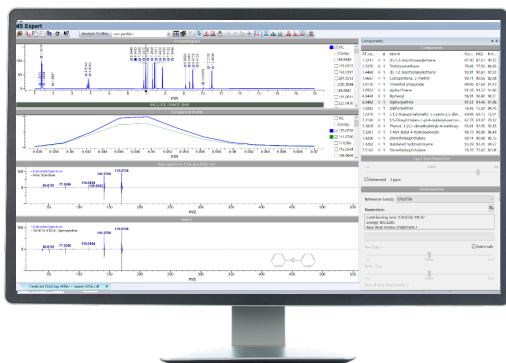


From the Leader in Spectral Data

Accelerate MS Analysis



**Powerful Software. Quality Data.
Results You Can Rely On.**



*Supports multiple techniques and instrument
vendor formats to streamline your workflow.*



Learn more
www.paastech.com

**Find out how KnowItAll can
transform your lab!**

KnowItAll offers solutions to identify, analyze, and manage your MS data. Combined with the world's largest spectral reference databases, it provides one of the most advanced technologies available for fast, reliable spectral analysis.

With the NEW KnowItAll 2023, Wiley continues to expand KnowItAll's MS capabilities, with tools to automate mass spectrometry processing and accelerate analysis workflows.

WILEY